



*The Original*  
MIPOLAM 1937

**Mipolam Planet**

**Gerflor®**



# Mipolam Planet

## Robust construction for high traffic applications

Conception robuste pour applications fort trafic



### Heavy traffic resistance

Résistance au trafic intense

EVERCARE™

### Ease of maintenance thanks to Evercare™

Facilité d'entretien grâce à Evercare™

40  
COLOURS

### Bright and subtle non directional design

Décor non directionnel, lumineux et subtil

5  
SOLUTIONS

### 1 product, 5 solutions (PLANET / BIOPLANET / R10 / EL7 / EL5)

1 produit, 5 solutions (PLANET / BIOPLANET / R10 / EL7 / EL5)



### Roll 2 × 20m

Tiles 608×608mm on demand

Rouleaux 2×20 m

Dalles 608×608mm sur demande

## Eco-designed solution Solution éco-conçue



### Bio content 17%

(Mipolam BioPlanet - on demand)

Contenu bio-sourcé 17%

(Mipolam BioPlanet - sur commande)



### Recycled content: up to 25% 100% Recyclable

Contenu recyclé : jusqu'à 25%  
100% recyclable



### Anti-viral activity & Anti-bacterial activity

#### Indoor air quality: TVOC 100 times below standard

Activité anti-bactérienne  
et anti-virale

Qualité de l'Air : TCOV 100 fois  
inférieur à la norme.


### we care / we act

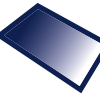
Our Commitments for a Sustainable future




**An exclusive and Gerflor patented surface treatment.**  
 Traitement de surface exclusif breveté Gerflor.

 **Stain shield**  
 Bouclier anti-taches

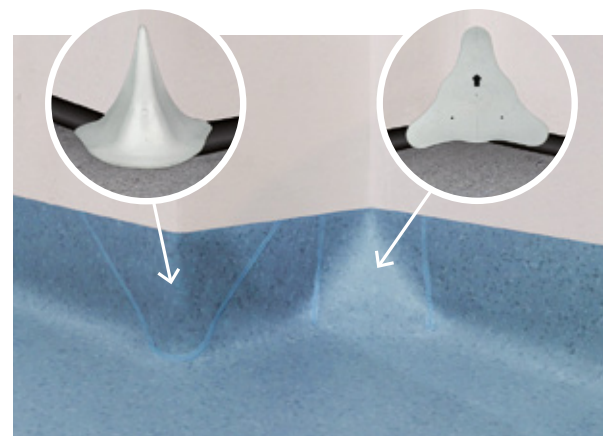
 **No wax for life**  
**Water and detergent savings**  
 Pas de métallisation nécessaire  
 Économie d'eau et de détergent

 **Matt effect: enhanced design**  
 Effet mat : pour sublimer le décor

 **Anti-bacterial & anti-viral activity**  
 Activité anti-bactérienne et anti-virale  
 ISO 22196 & ISO 21702



**An innovative corner system serving hygiene**  
 Un système d'angle innovant, au service de l'hygiène

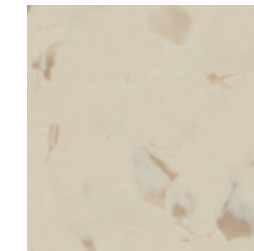


**Suitable for all Gerflor VINYL floors**  
 Clean Corner System enables to treat corners to meet all healthcare & industry requirements.

**Adapté aux sols PVC Gerflor**  
 Le Clean Corner System permet de traiter les angles pour répondre aux exigences des secteurs de la santé et de l'industrie.

# Mipolam Planet

**5 flooring solutions**  
 5 solutions pour toutes les applications



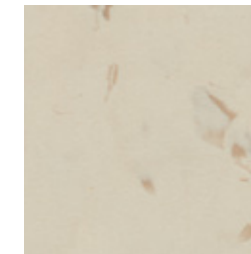
**MIPOLAM PLANET R10**  
 40 designs  
 ☉ on demand\* / sur commande\*



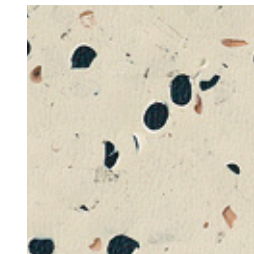
**MIPOLAM PLANET**  
 40 designs  
 ☉ on stock / en stock  
 ◇ on demand\* / sur commande\*



**MIPOLAM EL7**  
 Dissipative / Dissipateur  
 10 designs  
 ☉ on stock / en stock  
 ◇ on demand\* / sur commande\*



**MIPOLAM BIOPLANET**  
 Bio content / Contenu bio-sourcé  
 40 designs  
 ☉ on demand\* / sur commande\*



**MIPOLAM EL5**  
 Conductive / Conducteur  
 6 designs  
 ☉ on stock / en stock

\*MOQ 500sqm / 500m<sup>2</sup> minimum

## More than a floor... Floor, wall & Finishes

Plus qu'un sol... Solutions complètes, sols, murs & finitions



- 1 2m width roll  
Rouleau 2 m de large
- 2 Hot welding  
Cordon de soudure
- 3 Coving  
Remontée en plinthe
- 4 Flexible wall covering  
or rigid wall protection  
Mural souple et protection murale rigide
- 5 Handrails  
Mains courantes
- 6 Entry mat  
Tapis d'entrée

Images & pictures have been reproduced as faithfully as printing technology permits / Images & photos non contractuelles

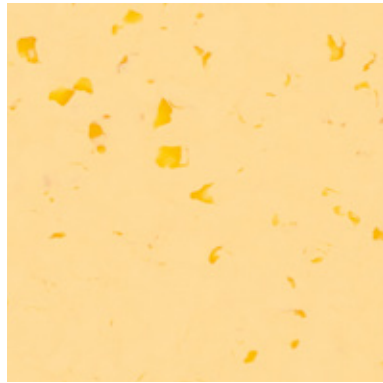


# Mipolam Planet

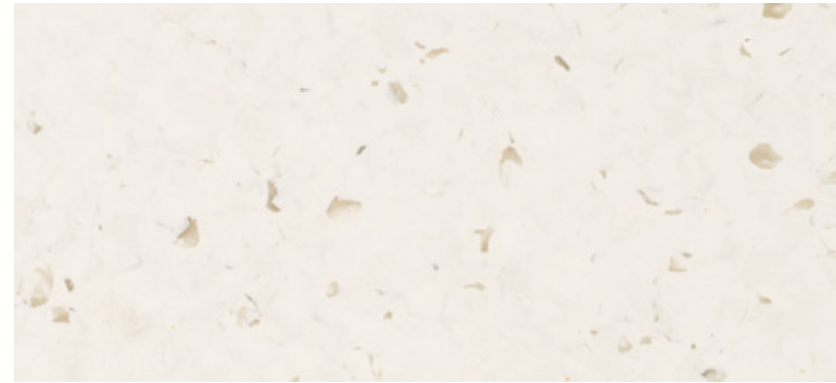



**Evercare™**

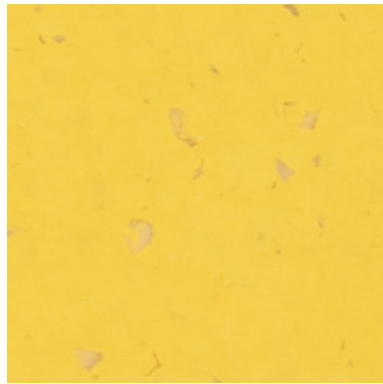
  
**Matt effect**



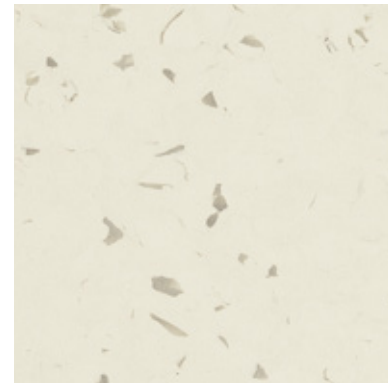
**5432 Sun Stone** EL7  
 NCS: 1030-Y20R / LRV: 57.7



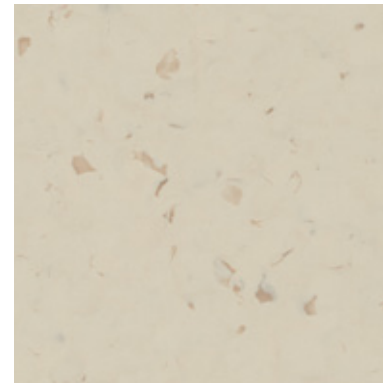
**5403 Moon Dust** EL7  
 NCS: 1002-Y50R / LRV: 72.2



**5422 Sunflower**  
 NCS: 2050-Y10R / LRV: 46.5



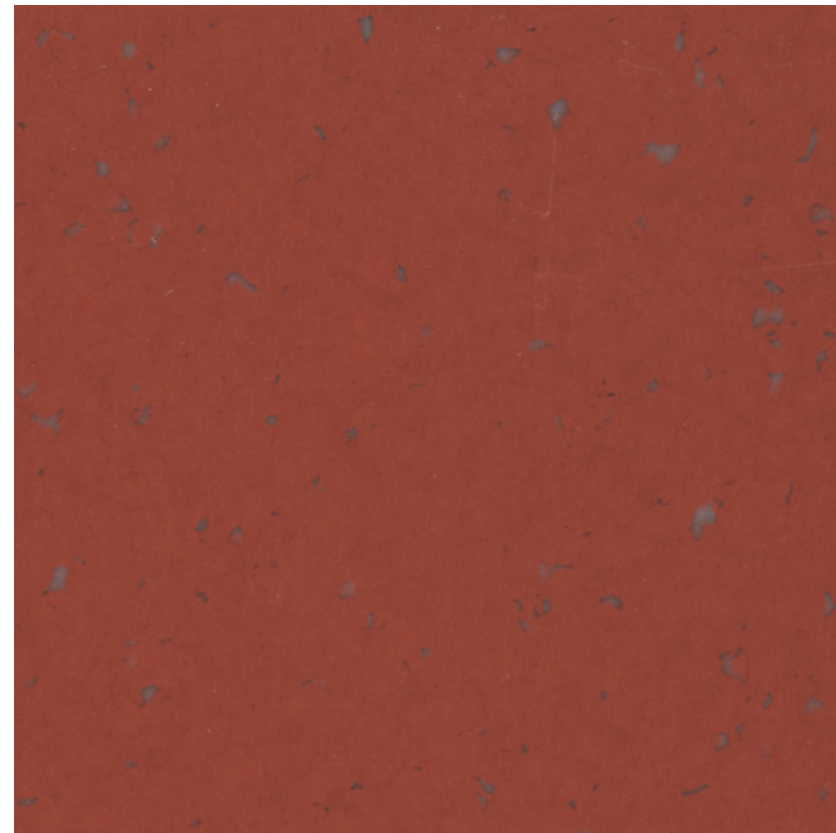
**5402 Ivory Dust**  
 NCS: 1005-Y30R / LRV: 68.2



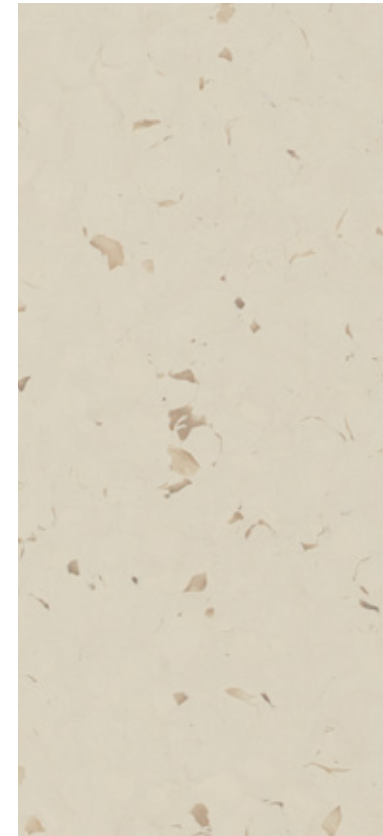
**5424 Hawk Eye** EL7  
 NCS: 2005-Y40R / LRV: 54



**5455 Lava Flow**  
 NCS: 3050-Y70R / LRV: 17.5



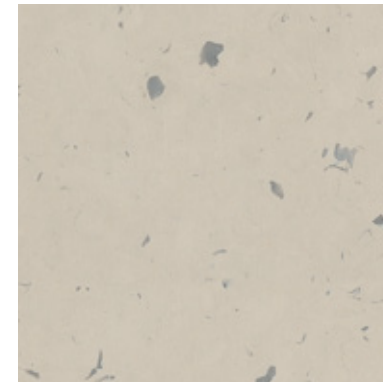
**5475 Intense Ruby**  
 NCS: 5030-Y80R / LRV: 9.8



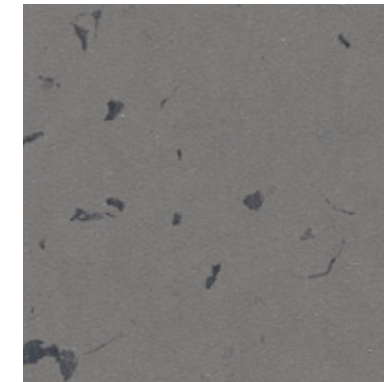
**5404 Vanilla Sky** EL5  
 NCS: 2005-Y30R / LRV: 53



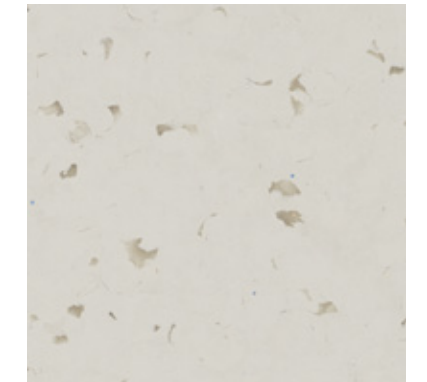
**5412 Moon Stone** EL7  
 NCS: 2002-Y50R / LRV: 52.3



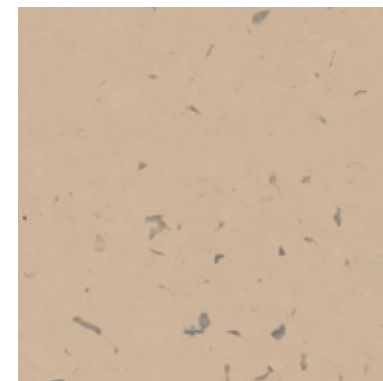
**5441 Clay Soil**  
 NCS: 3005-Y50R / LRV: 42.2



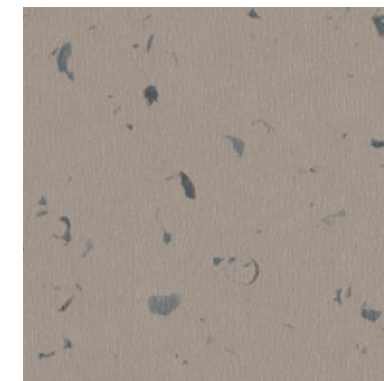
**5444 Rocky Hill**  
 NCS: 6000-N / LRV: 16.1



**5415 Tree Bark** EL7  
 NCS: 6010-Y50R / LRV: 11.5



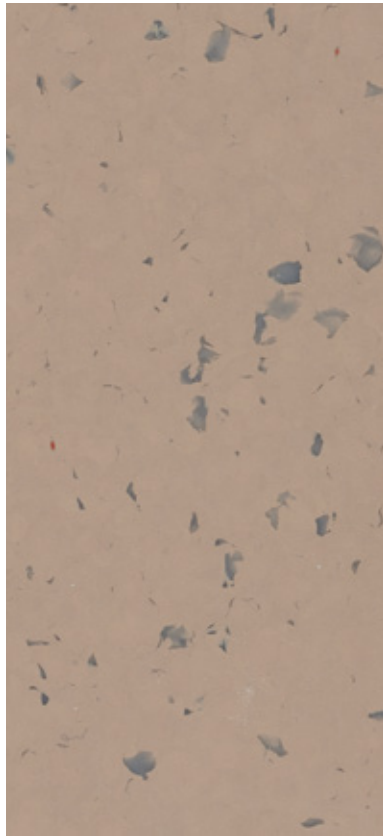
**5418 Terra Nerra**  
 NCS: 3010-Y40R / LRV: 38.2



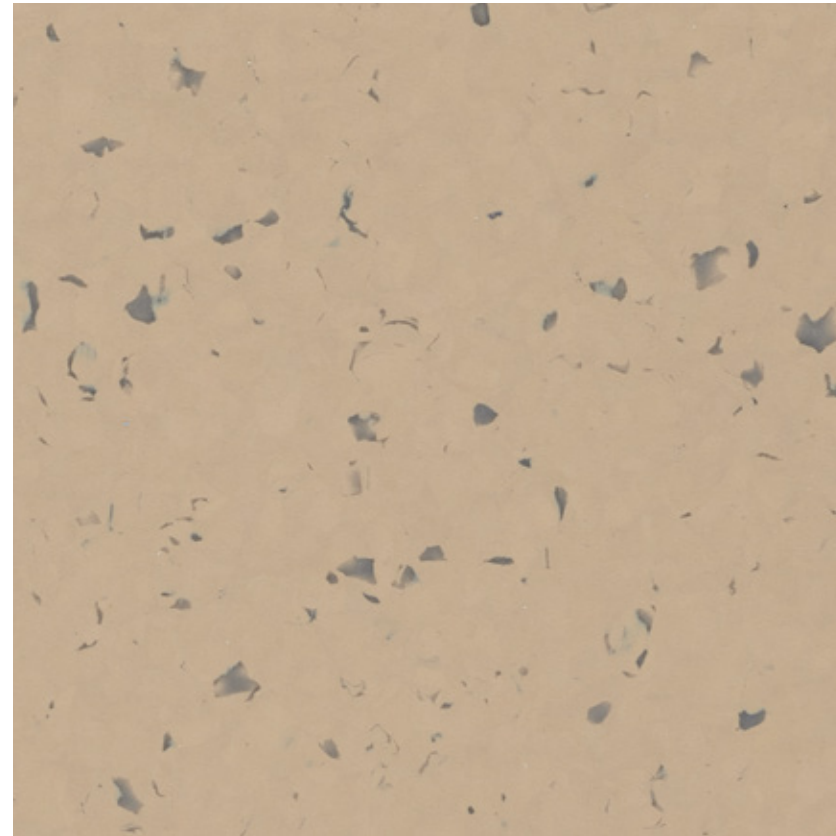
**5443 Wood Path**  
 NCS: 5005-Y50R / LRV: 25.2

© All products available as Compact sheets / Toutes les références sont disponibles en rouleaux "compact"  
 Compact tile (608x608mm) available for a minimum quantity order of 500sq.m  
 Dalles "compact" (608x608 mm) disponibles pour un minimum de commande de 500m<sup>2</sup>

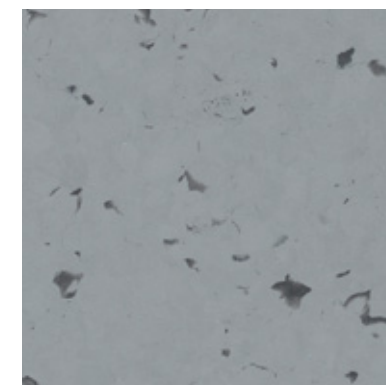
**For equivalence of EL5, EL7 codes or welding rods: details on gerflor.com**  
 Equivalence codes EL5, EL7 et cordons de soudure : disponibles sur gerflor.com



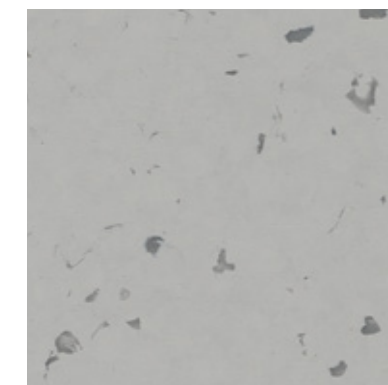
**5438 Andalusite**  
NCS: 4010-Y50R / LRV: 29.4



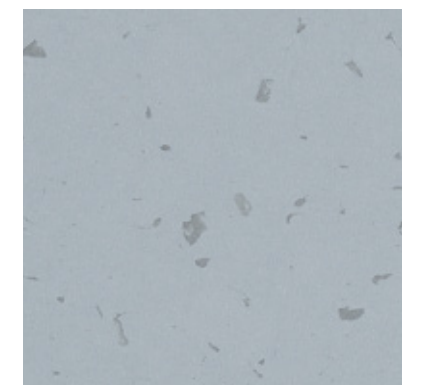
**5428 Shedded Ground**  
NCS: 3010-Y40R / LRV: 35.4



**5430 Sideral Grey**  
NCS: 4502-B / LRV: 27.2

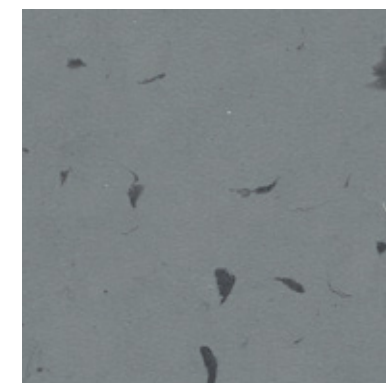


**5439 Moon Way**  
NCS: 3502-R / LRV: 37



**5420 Stone Powder**  
NCS: 3010-R70B / LRV: 36.4

EL7

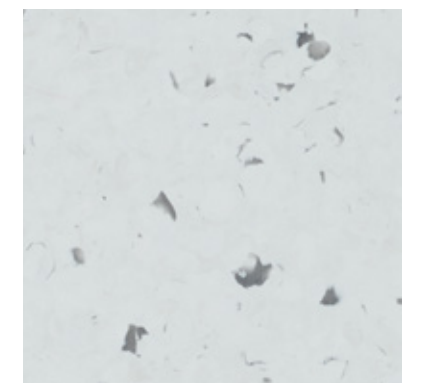


**5450 Blended Ashes**  
NCS: 5502-B / LRV: 20.1



**5413 Rain Fall**  
NCS: 2010-R70B / LRV: 49.5

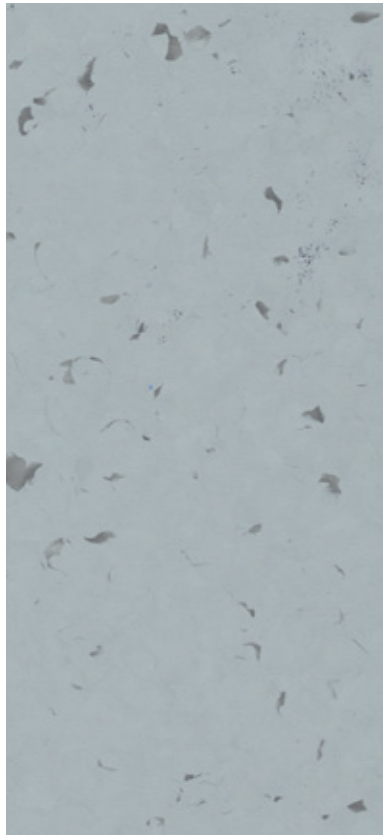
EL7



**5410 Sillex**  
NCS: 1502-B / LRV: 60.9

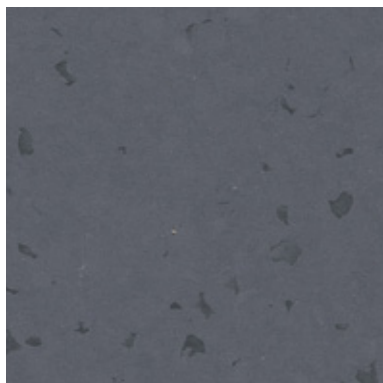
EL5





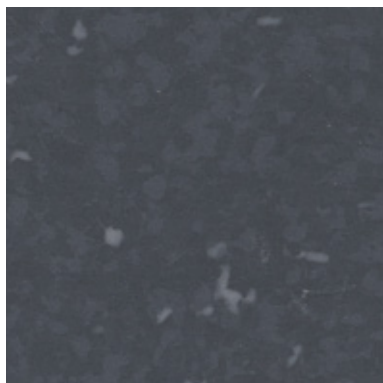
5429 Fog Patch  
NCS: 3005-R80B / LRV: 35.9

EL5



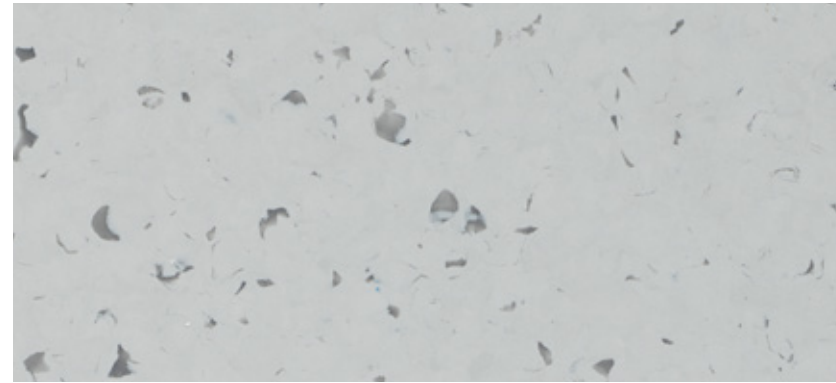
5459 Stormy Cloud  
NCS: 7005-R50B / LRV: 10.4

EL7

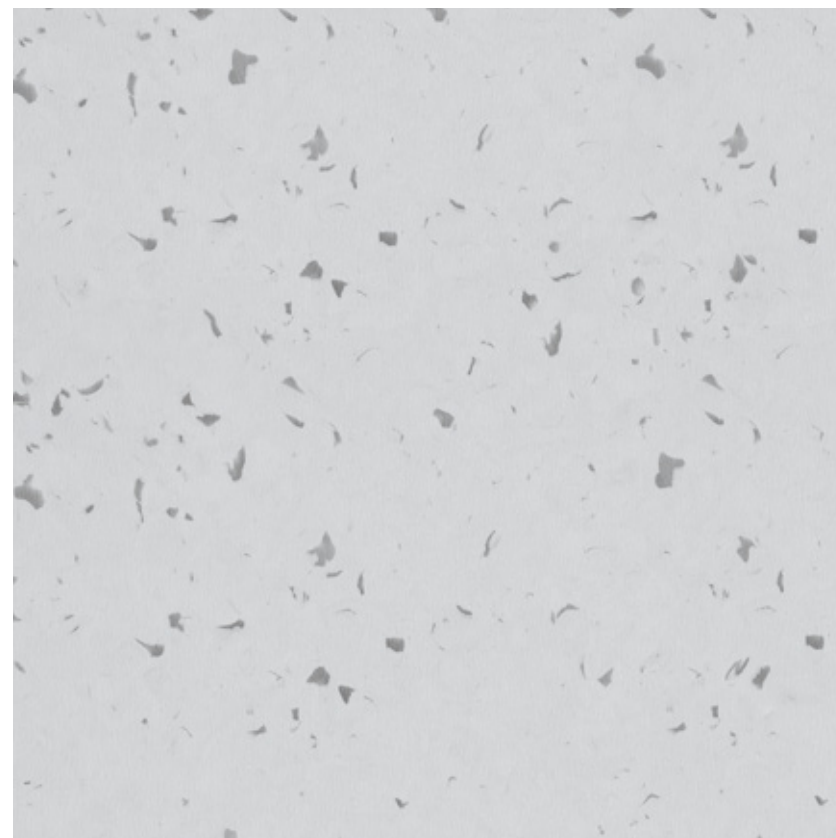


5460 Lava Stone  
NCS: 7502-B / LRV: 6.5

EL5



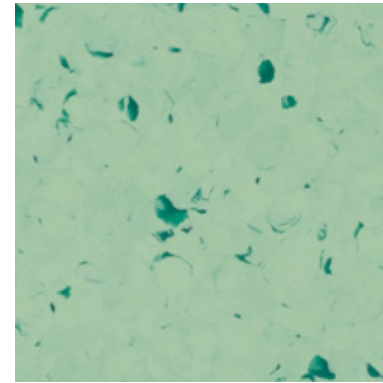
5411 Atlantic Grey  
NCS: 2500-N / LRV: 49.1



5409 Pebble Beach  
NCS: 2002-R50B / LRV: 53.4

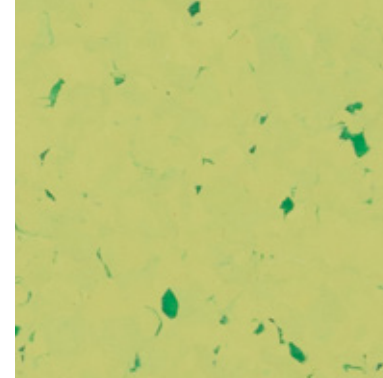


5408 Chalk Dust  
NCS: 1500-N / LRV: 65.8

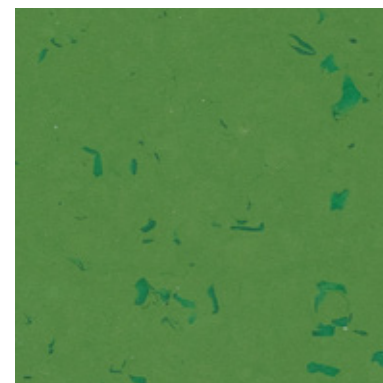


5417 Foggy Hill  
NCS: 2020-G20Y / LRV: 39.4

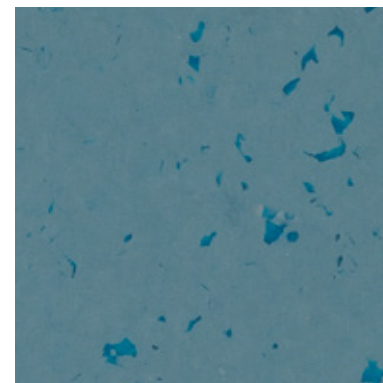
EL5



5427 Green Zest  
NCS: 2030-G80Y / LRV: 45.3

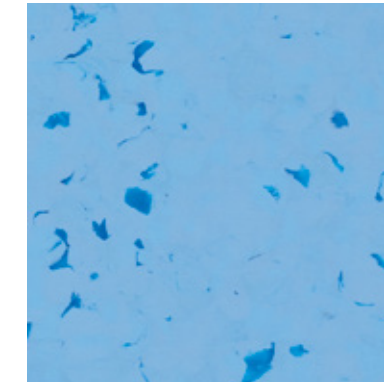


5447 Aventurine  
NCS: 4040-G30Y / LRV: 17.1



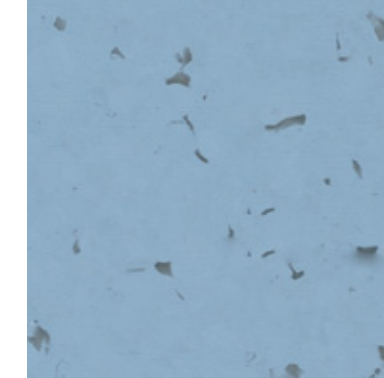
5466 Rocky Blue  
NCS: 5020-B10G / LRV: 16.9

EL7



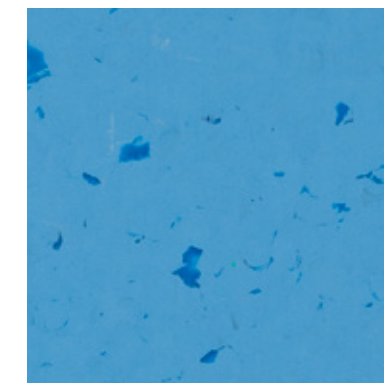
5426 Shadow  
NCS: 2040-R90B / LRV: 35.5

EL5

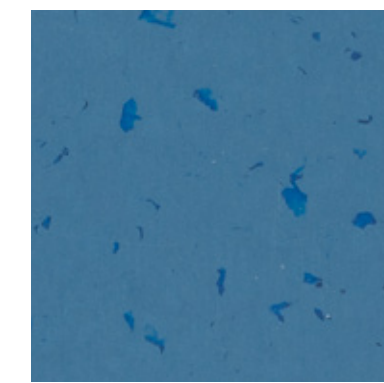


5416 Acquamarina  
NCS: 3020-R90B / LRV: 33.2

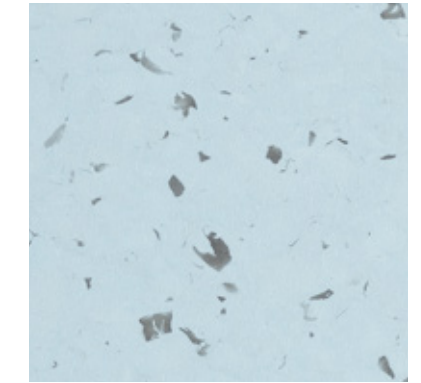
EL7



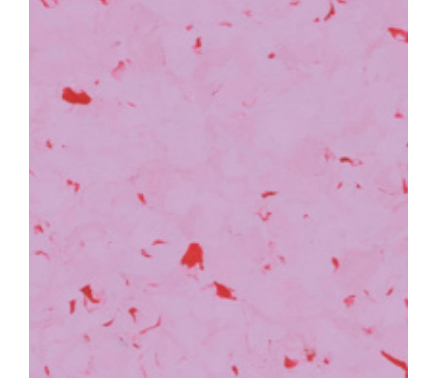
5436 Tiger Eye  
NCS: 2050-R90B / LRV: 24.5



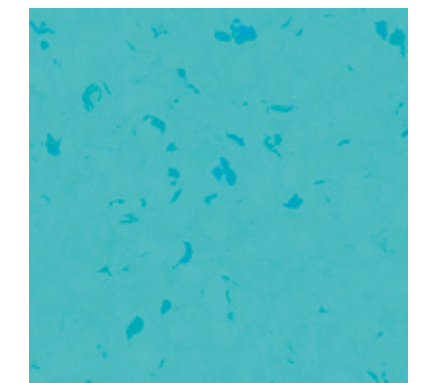
5446 Blue Nug  
NCS: 5030-R90B / LRV: 13.5



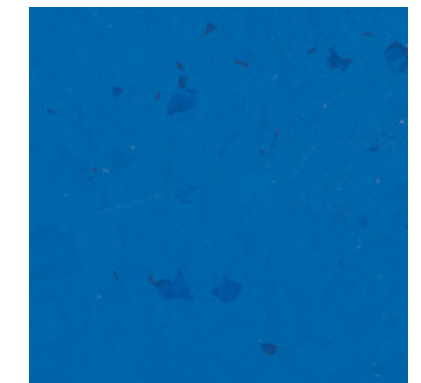
5406 Moqui  
NCS: 1515-R90B / LRV: 52.1



5482 Sugar Drip  
NCS: 2030-R40B / LRV: 34.8



5437 Reef Water  
NCS: 1050-B40G / LRV: 42



5456 Intense Indigo  
NCS: 3050-R80B / LRV: 12






# Mipolam Planet

gerflor.com / follow us   



\* Information sur le niveau d'émission de substances volatiles dans l'air intérieur, présentant un risque de toxicité par inhalation, sur une échelle de classe allant de A+ (très faibles émissions) à C (fortes émissions)



	Mipolam Planet	Mipolam BioPlanet	Mipolam Planet R10	Mipolam EL7	Mipolam EL5
<b>Description</b>					
<b>Total thickness / Epaisseur totale</b>	<b>EN ISO 24346</b>	<b>mm</b>	<b>2.00</b>	2.00	2.00
<b>Weight / Poids</b>	<b>EN ISO 23997</b>	<b>g/sq.m</b>	<b>2700</b>	2700	2700
Width of sheet / Largeur des lés	EN ISO 24341	cm	200	200	200
Length of sheet / Longueur des lés	EN ISO 24341	lm	20	20	20
<b>Classification</b>					
<b>Norm/product specification / Norme / Spécification produit</b>	-	-	<b>EN ISO 10581</b>	EN ISO 10581	EN ISO 10581
<b>European classification / Classement européen</b>	<b>EN ISO 10874</b>	<b>class / classe</b>	<b>34-43</b>	34-43	34-43
<b>Classement UPEC</b>	-	<b>class / classe</b>	<b>U4P3E2/3C2</b>	Pour pose dans des locaux classés U4P3E2/3C2	-
<b>Certification  UPEC (evaluation.cstb.fr)</b>	<b>QB 30</b>	<b>n° certif.</b>	<b>332-015.1</b>	332-016.1	-
Fire rating / Réaction au feu	EN 13 501-1	class	Bfl-s1	Bfl-s1	Bfl-s1
Electrical resistance / Résistance électrique <sup>(1)</sup>	EN 1081	Ohm	-	-	10 <sup>6</sup> ≤ Rt ≤ 10 <sup>8</sup>
Static electrical propensity / Potentiel de charge	EN 1815	kV	< 2	< 2	< 2
Slip resistance / Glissance	EN 16165:2021 - Appendix B (DIN 51 130) / BGR 181	class / classe	R9	R9	R10
<b>Performances</b>					
Type binder content / Teneur en agent liant	EN ISO 10581	type	I	I	I
<b>Dimensional stability / Stabilité dimensionnelle</b>	<b>EN ISO 23999</b>	<b>%</b>	<b>sheet &lt; 0.40</b>	sheet < 0.40	sheet < 0.40
Dimensional stability (average measured value) / Stabilité dimensionnelle (valeur moyenne mesurée)	-	%	sheet ≈ 0.10	sheet ≈ 0.10	sheet ≈ 0.10
Impact sound insulation / Isolation acoustique aux bruits de choc	EN ISO 717-2	dB	5	5	5
<b>Residual indentation (norm) / Poinçonnement statique rémanent (norme)</b>	<b>EN ISO 24343-1</b>	<b>mm</b>	<b>≤ 0.10</b>	≤ 0.10	≤ 0.10
Residual indentation (average measured value) / Poinçonnement statique rémanent (valeur moyenne mesurée)	-	mm	~ 0.02	~ 0.02	~ 0.02
<b>Castor chair test (type H) / Essai de la chaise à roulettes (type H)</b>	<b>ISO 4918</b>	-	<b>OK</b>	OK	OK
Decontamination / Décontamination	ISO 8690	-	Excellent	Excellent	Excellent
Watertightness / Etanchéité	EN 13553	Annex A	Pass	Pass	Pass
Thermal conductivity / Conductivité thermique	EN ISO 10456	W/(m.K)	0.25	0.25	0.25
<b>Colour fastness / Solidité lumière</b>	<b>EN 20 105 - B02 degree / degré</b>	-	<b>≥ 7</b>	≥ 7	≥ 7
Surface treatment / Traitement de surface	-	-	Evercare™	Evercare™	Evercare™
Chemical resistance / Résistance aux produits chimiques <sup>(2)</sup>	EN ISO 26987	class / classe	OK	OK	OK
Anti-bacterial activity (E. coli - S. aureus - MRSA) / Activité anti-bactérienne E. coli - S. aureus - MRSA <sup>(3)</sup>	ISO 22196	-	> 99 % inhibits growth / ne favorise pas la prolifération		
Anti-viral activity (human coronavirus 229E) / Activité Anti-virale (Coronavirus humain)	ISO 21702	-	99.7% after 2h / 99,7% après 2h		
<b>Environment/Indoor Air Quality / Environnement / Qualité de l'Air</b>					
TVOC after 28 days / TCOV après 28 j	ISO 16000-6	microgramms/ m <sup>3</sup>	< 10	< 10	< 10
Certification / Certification	-	-	Floorscore®	Floorscore®	Floorscore®
<b>CE Marking / Marquage CE</b>					
	EN 14041	-			
(1) Measured before installation / Mesuré avant installation	-	-	-	-	-
(2) Stain resistance results on gerflor.com / Données de Résistance aux taches sur gerflor.fr	-	-	-	-	-
(3) The implementation of an effective cleaning method is the best defence against infection / Le respect des protocoles d'entretien des sols est la meilleure garantie contre les infections.	-	-	-	-	-




(1) Measured before installation / Mesuré avant installation

(2) Stain resistance results on gerflor.com / Données de Résistance aux taches sur gerflor.fr


(3) The implementation of an effective cleaning method is the best defence against infection / Le respect des protocoles d'entretien des sols est la meilleure garantie contre les infections.

Product descriptions, installation and Maintenance Guidelines, available on Gerflor.com

 Rubber leaves indelible stains on vinyl floorings: do not use mats with rubber backing and replace tubular furniture feet with those made of PVC or polyamide. Place mats of sufficient length at entrances to reduce outside sources of dirt.

**IMPORTANT:** The information contained in this document is valid from 04/2024 and is subject to change at any time without notice. In the context of constantly changing technology, our customers are responsible, prior to any use, for checking with us that this document is the version in force.

Modèles de descriptifs, principes de mise en oeuvre et méthodes d'entretien sur gerflor.fr

 Proscrire tout élément ou partie d'éléments en caoutchouc susceptible d'être en contact direct avec nos revêtements (embouts de chaises, mobiliers...) et utiliser exclusivement des embouts en PVC ou Polyéthylène. Pour les matériaux EVERCARE™, ne jamais effectuer de décapage avec les disques abrasifs (vert, marron ou noir) ou des procédés risquant de détériorer le traitement de surface (abrasifs, solvant...).

**IMPORTANT :** Les informations contenues dans ce document sont valables à compter du 04/2024 et susceptibles d'être modifiées sans préavis. L'évolution de la technique étant permanente, il appartient à notre clientèle, avant toute mise en oeuvre, de vérifier auprès de nos services que le présent document est bien celui en vigueur.

**We care / We act** Our Commitments for a Sustainable future

  
**CARBON FOOTPRINT\***  
-20 % kg CO<sub>2</sub> equivalent/m<sup>2</sup> between 2020 and 2025

  
**BIO-SOURCED CONTENT\*\***  
10 % by 2025

  
**RECYCLED CONTENT**  
30 % by 2025

  
**ADHESIVE FREE\*\*\***  
35 % by 2025

  
**ANNUAL VOLUME RECYCLED**  
60 000 t by 2025



\* Scopes 1 and 2 defined in the GHG protocol \*\* % of activity with biosourced materials \*\*\* % of activity - adhesive free solution